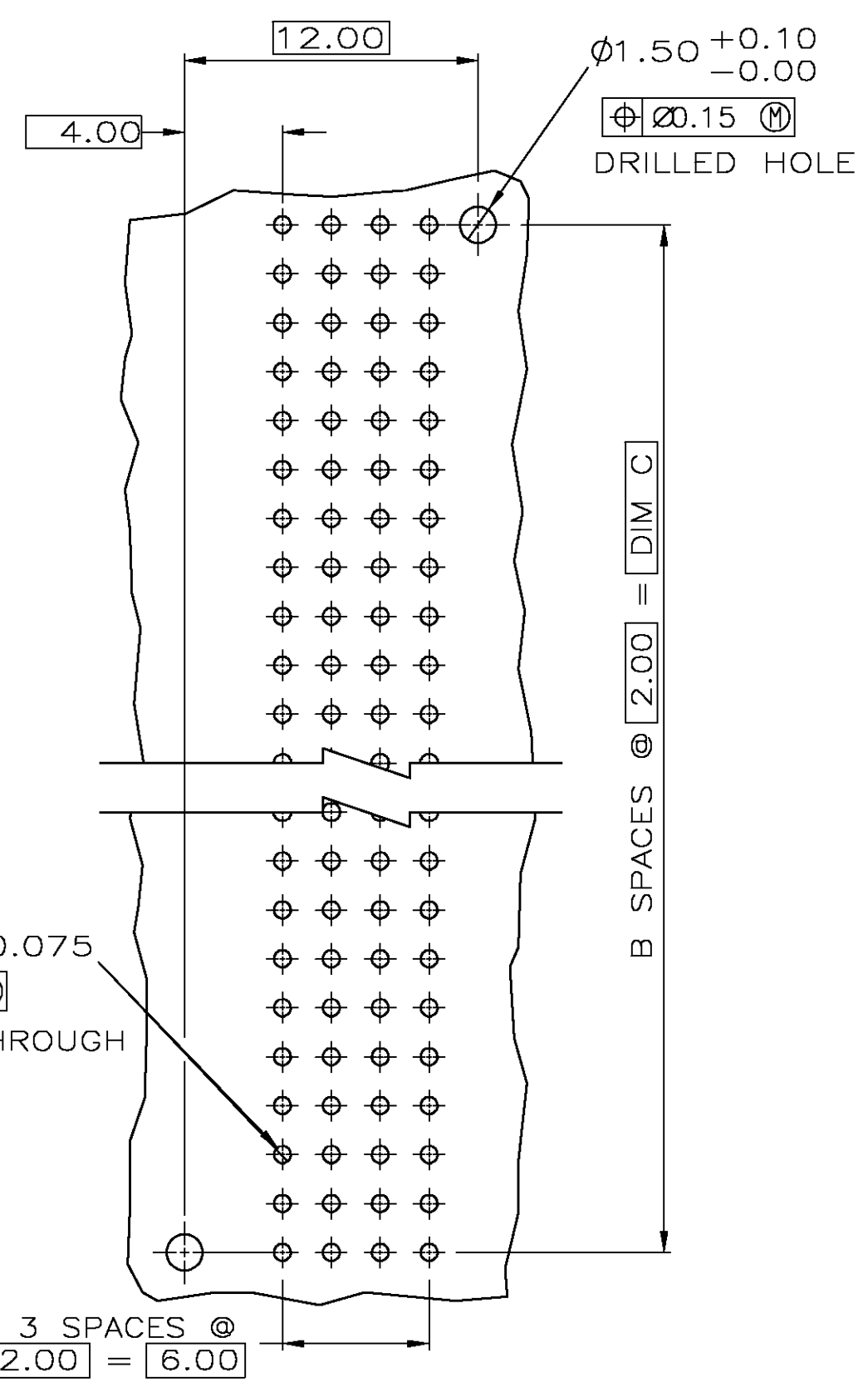
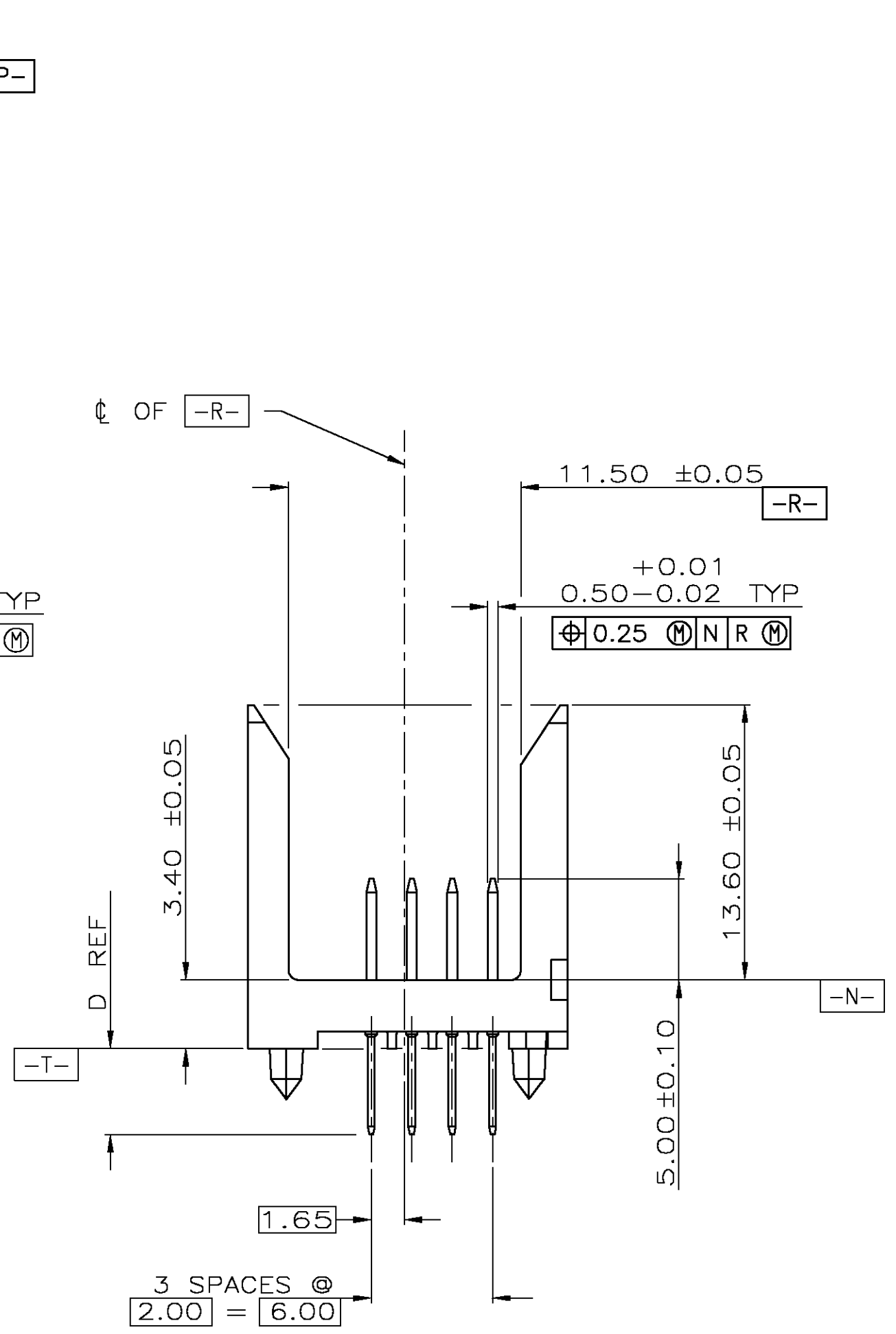
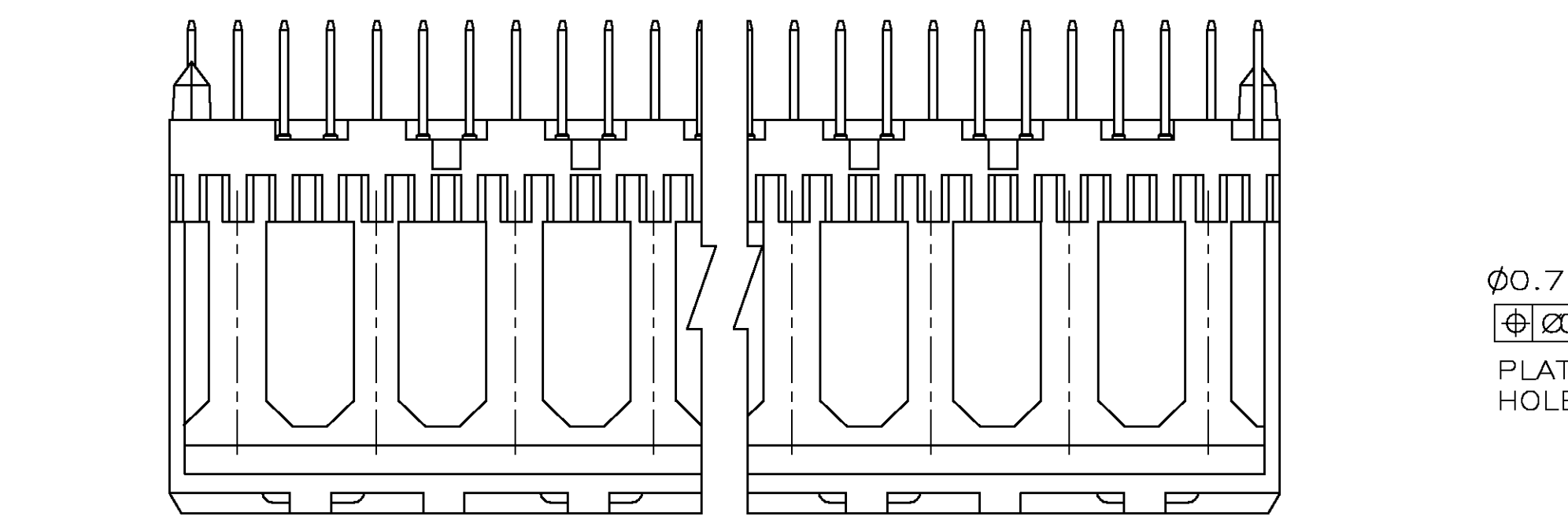
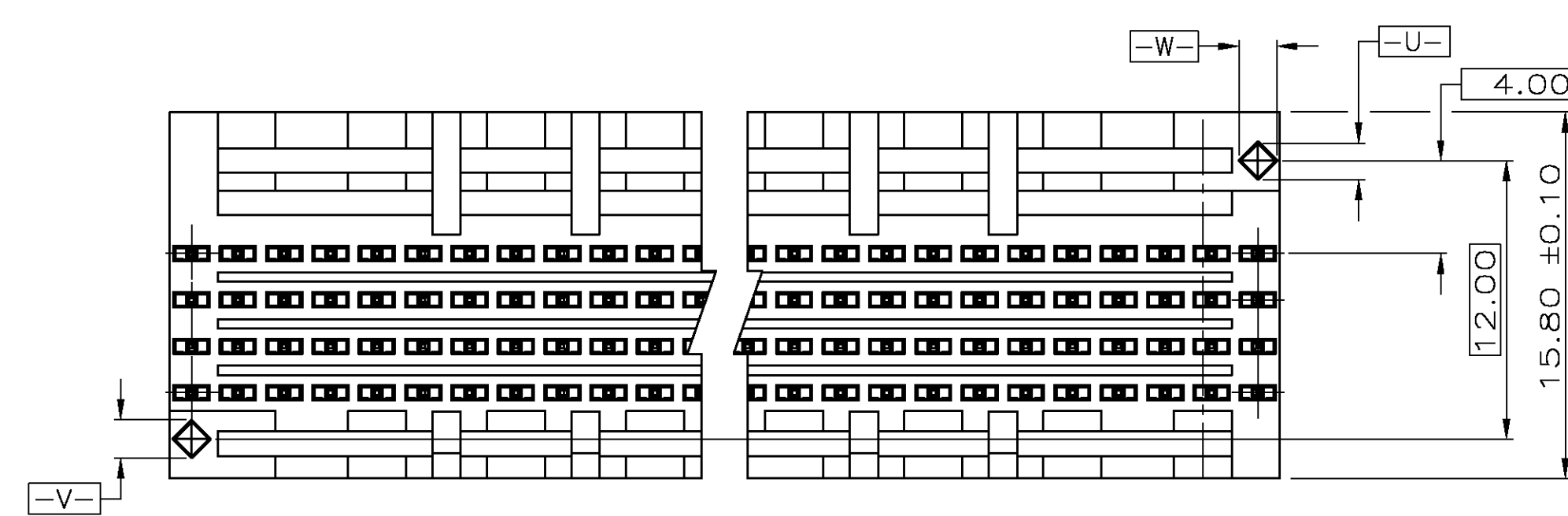
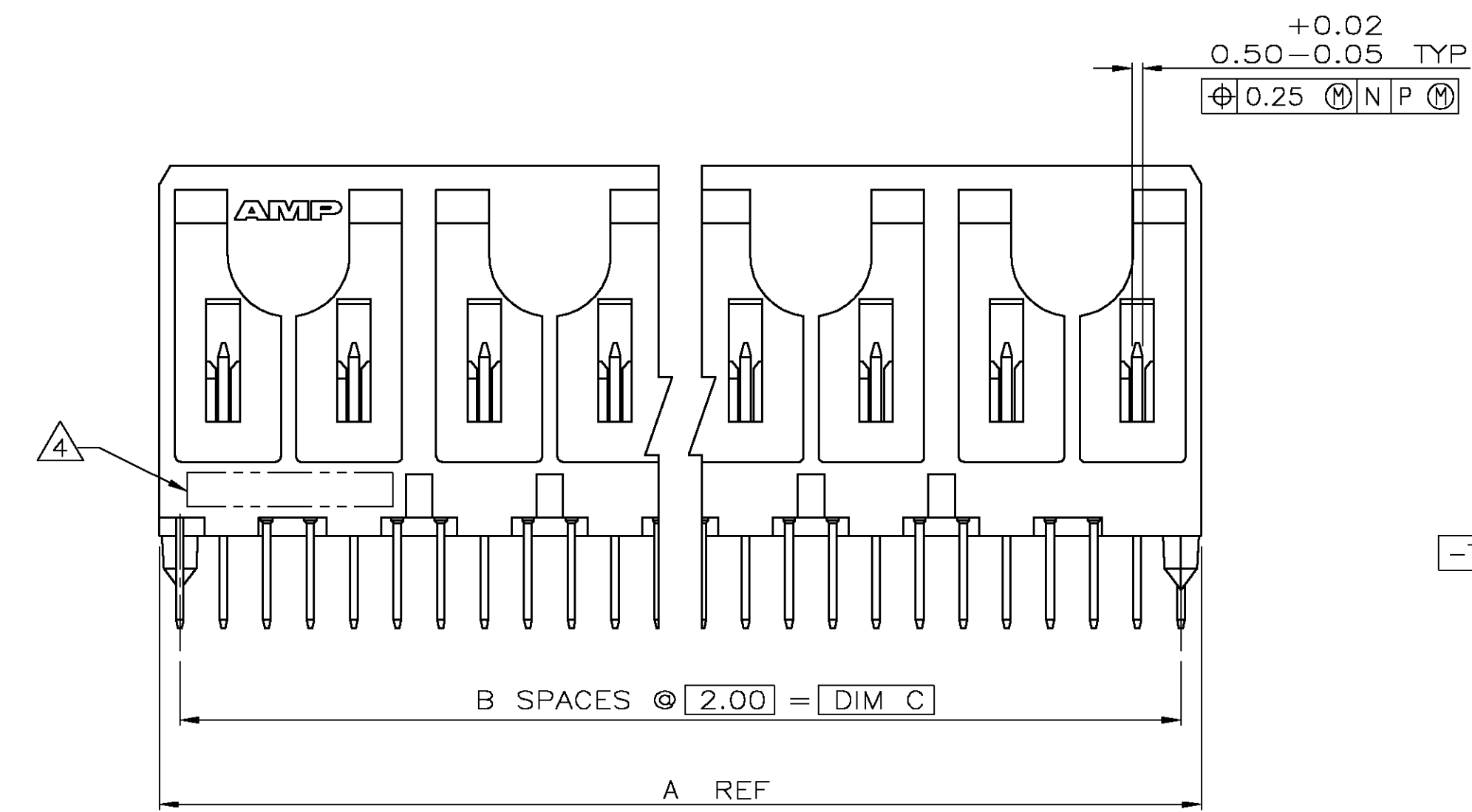
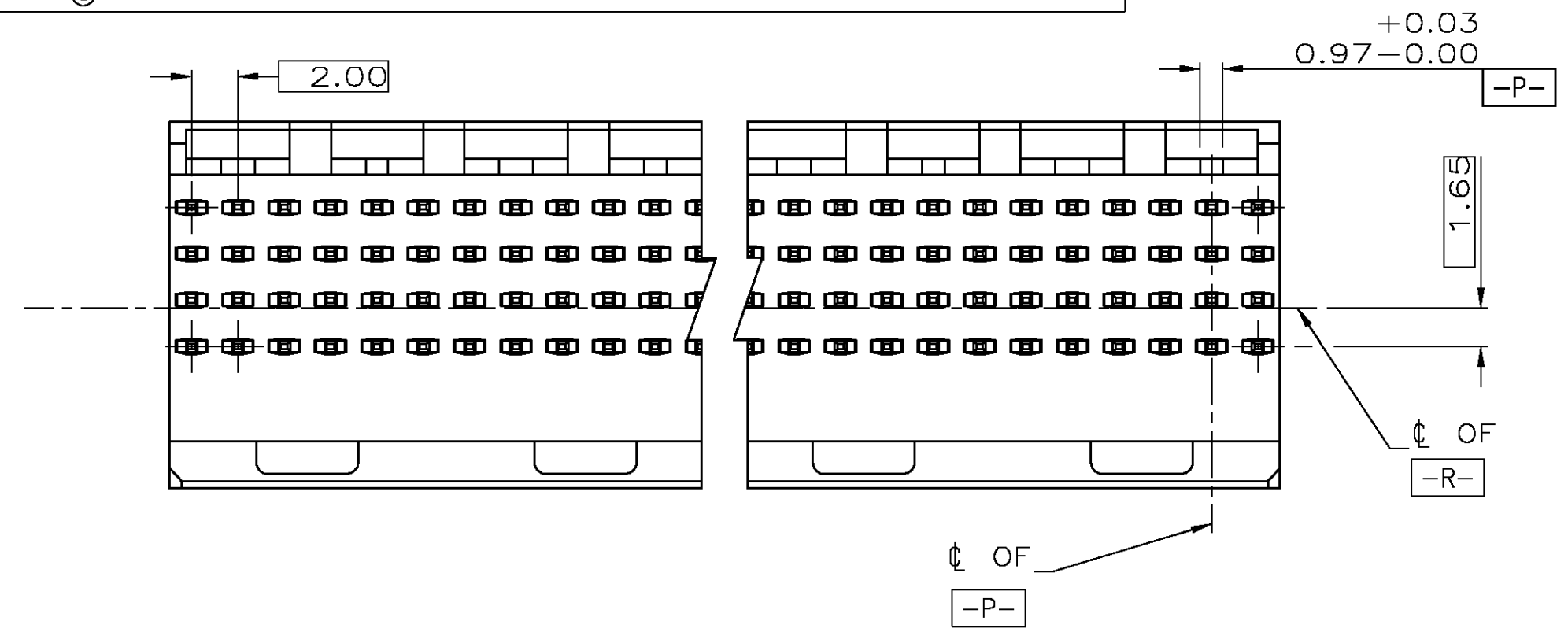
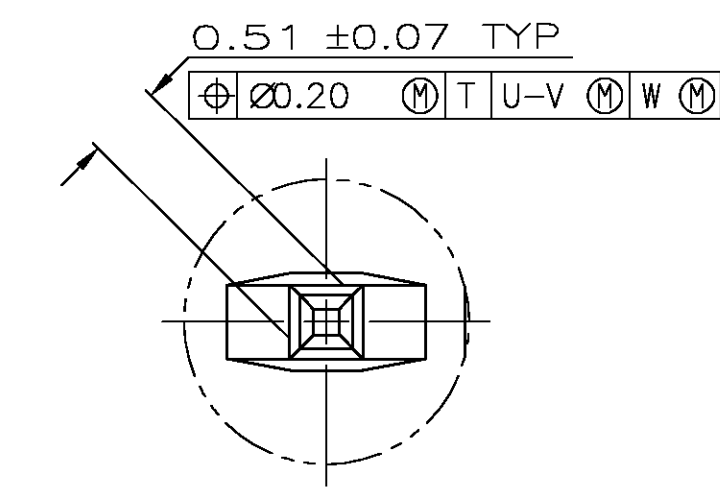


LOC		DIST		REV		REVISIONS		DATE	APPD
AD	47	P	F	ZONE	LTR	DESCRIPTION			
				M		REV PER EC 0512-0414-03		24FEB04	RW



- ① HOUSING MATERIAL: LIQUID CRYSTAL POLYMER PER ASTM D5138 LCP000 G30A 32250.
- ② CONTACT MATERIAL: PHOSPHOR BRONZE.
- ③ CONTACT FINISH:
 UNDERPLATE (ENTIRE CONTACT):
 0.00127 MIN NICKEL.
 ON MATING SURFACES:
 CONFORMS TO ALL TESTING SPECIFIED FOR TELCORDIA
 UNCONTROLLED ENVIRONMENT.
 ON LEADS
 0.00381 MIN TIN-LEAD OVER UNDERPLATE.
 LUBRICATION (ENTIRE CONTACT):
 SURFACE CONDITIONER PER AMP SPEC 112-1002 AFTER PLATING.
- ④ PART MARKING PER AMP INCORPORATED SPECIFICATION 115-9009, LOCATED APPROXIMATELY AS SHOWN.



4.25	72.00	35	71.88	③	144	536513-5
4.25	94.00	47	95.88	③	192	536513-4
4.25	46.00	23	47.88	③	96	536513-3
4.25	22.00	11	23.88	③	48	536513-2
4.25	10.00	5	11.88	③	24	536513-1
D	C	B	A	FINISH	NO OF POSN	PART NUMBER

RECOMMENDED CIRCUIT PATTERN
 PER IPC-D300 TYPE II, CLASS C
 (COMPONENT SIDE)



THIS DRAWING IS A CONTROLLED DOCUMENT FOR AMP INCORPORATED. IT IS SUBJECT TO CHANGE AND THE CONTROLLING ENGINEERING ORGANIZATION SHOULD BE CONTACTED FOR THE LATEST REVISION.

DO NOT SCALE PRINT. UNLESS SPECIFIED DIMENSIONS IN MILLIMETERS TOLERANCES ON : 2 PLC DEC ± 0.13 3 PLC DEC ± - ANGLES ± - MATERIAL	DR 04/01/93 D.R.BENDER CHK 04/05/93 S.HEADER APPD 04/02/93 D.BAECHTLE APPD 04/02/93 G.PREPUTNICK PRODUCT SPEC	AMP AMP Incorporated Harrisburg, PA 17105-3608	
FINISH	APPLICATION SPEC	NAME PIN ASSEMBLY, SIGNAL MODULE, Z-PACK 2mm FB 2mm, 4 ROW, 5.00mm MATING LENGTH SOLDER LEAD	PART NO
		SIZE D	CAGE CODE 00779
		DRAWING NO C=536513	SHEET 10F 1
	WEIGHT	SCALE 4:1	